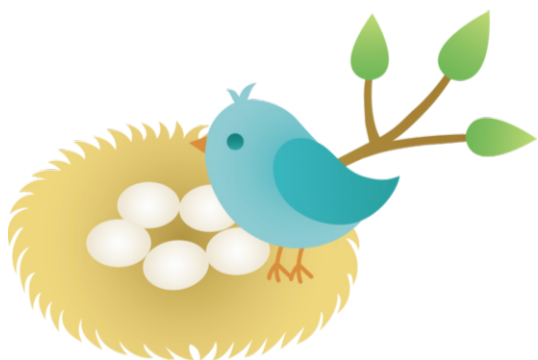


# North Jersey Bridge Association (Unit 106)



## SPRING SECTIONAL

### April 5-7, 2024

Christ Church,  
105 Cottage Pl, RIDGEWOOD, NJ

#### Friday, Apr 5, \$17 per session

- 10:00 Open Pairs (unlim./4000/2000)  
SILVER RUSH 999er PAIRS (1000/500/300)  
299er Pairs (300/100/50—no player over 300)
- 2:30 Open Pairs (unlim./4000/2000)  
SILVER RUSH 999er PAIRS (1000/500/300 )  
299er Pairs (300/100/50—no player over 300)

#### Saturday, Apr 6, \$17 per session

- 10:00 0-20 Newcomer Pairs  
Open Pairs (unlim./4000/2000)  
SILVER RUSH 999er PAIRS (1000/500/300)  
299er Pairs (300/100/50—no player over 300)
- 2:30 Open **IMP** Pairs (unlim./4000/2000)  
SILVER RUSH 999er PAIRS (1000/500/300)  
299er Pairs (300/100/50—no player over 300)

#### Sunday, Apr 7, \$45 per person (two sessions, brunch and light meal)

- 12:00 Bagel Brunch  
12:30 A/X Swiss Teams (unlim./4000)  
Bracketed B Teams (no player over 2500 mps)  
Light Meal Served

SILVER RUSH 999er Pairs—no player over 1000

Strats determined by MP average, but no player can exceed event limit.  
Strats can be varied depending on attendance.

Bracketed teams – Teams are bracketed by masterpoints and play only in their bracket.)

Limited Parking! Carpooling is advised. (Parking map on reverse)

**Silver  
Points!**

#### Tournament Chair

Patricia Rogers Linnemeyer  
(551) 427-6753  
pateddy@hotmail.com

#### Need a Partner?

Marty Becker  
914-329-1013  
mibdds43@yahoo.com

#### Game Site Phone:

(551) 427-6753

For more information:

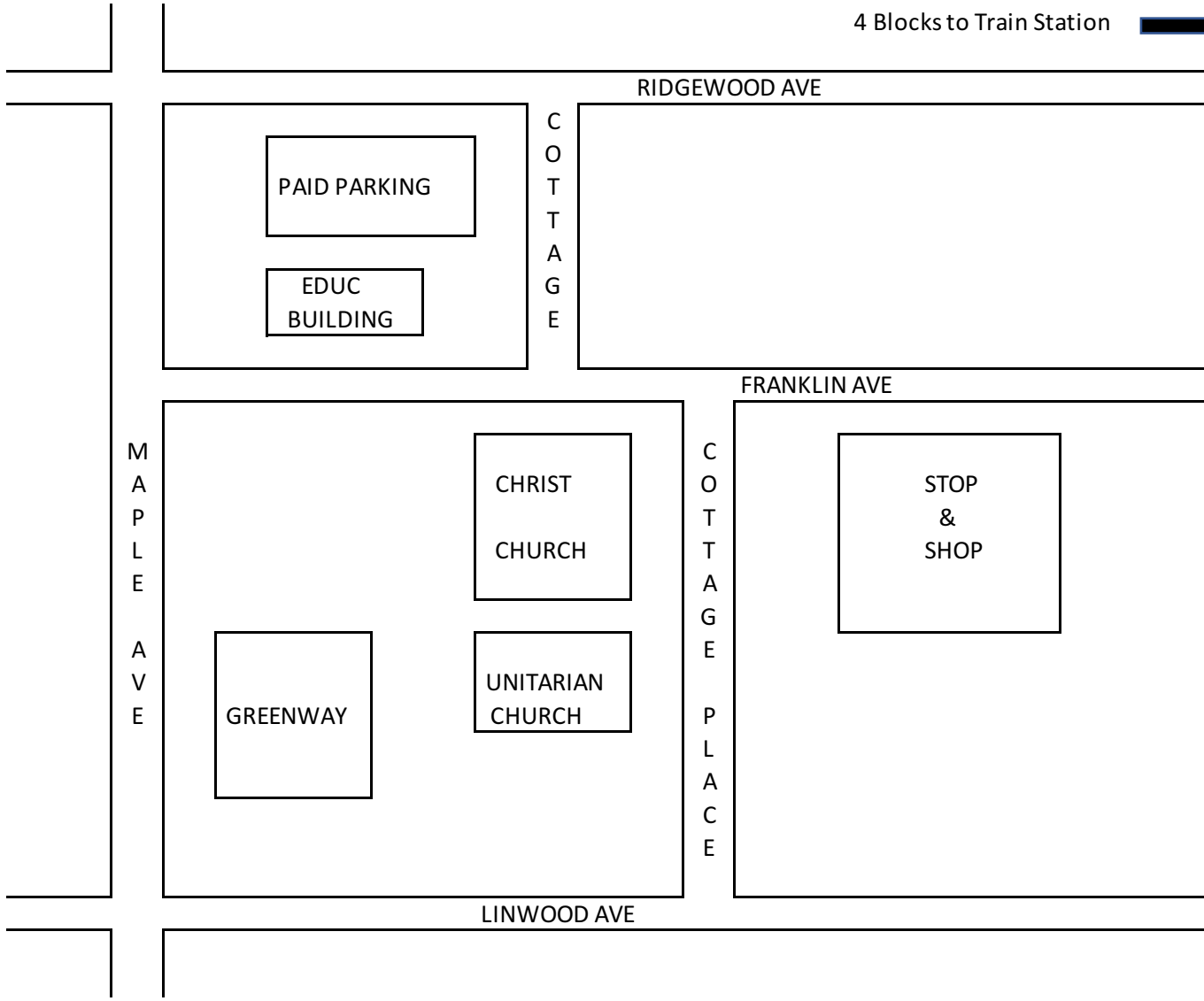
[www.bridge-njba.org](http://www.bridge-njba.org)

#### **Save the Dates!**

Unit 106 Sectionals  
Sep 6-8, 2024  
Nov 8-10, 2024  
Ridgewood, NJ

Parking Options - Unit 106 Sectional  
 Christ Church, 105 Cottage Place  
 Ridgewood, NJ 07450

4 Blocks to Train Station



<u>Location</u>	<u>Allowable Parking Spaces</u>
4 Hr Street Parking - Cottage Place	25
Christ Church (Front & Back Parking)	20
Christ Church (School Side Parking: Sat & Sun)	10
Unitarian Church	7
Stop & Shop (M-F)	20
Stop & Shop (Sat-Sun)	5
Greenway (M-F)	20
Greenway (Sat-Sun)	5
Education Building (Sat-Sun)	35
Paid Parking (Free on Sun)	150 (\$1 an hour)